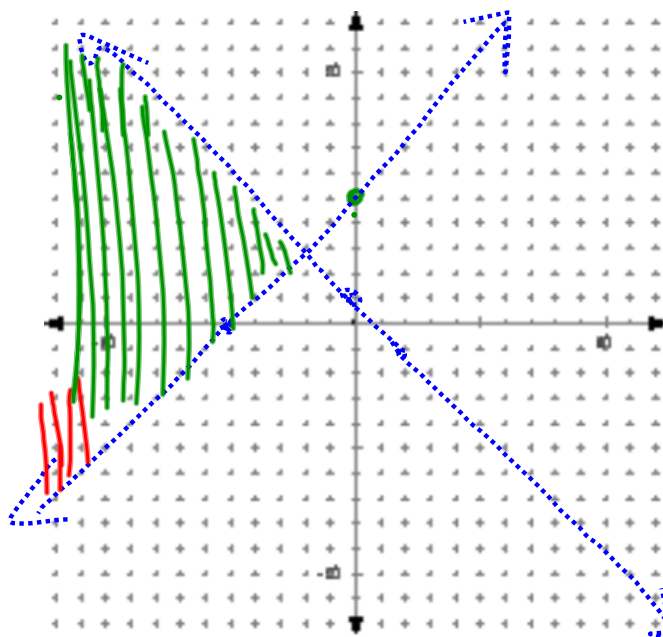


3-3 Graphing a System of Linear Inequalities

ex 1:

$$y > x + 5$$

$$y < -x + 1$$

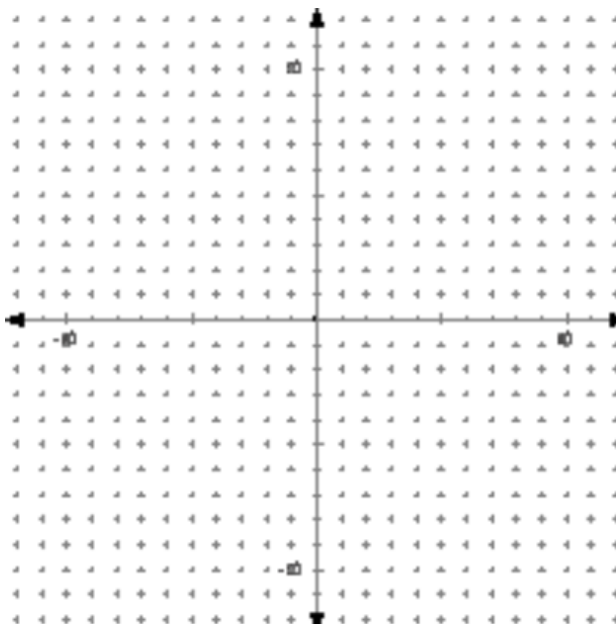


Nov 3-7:12 AM

ex 2:

$$2x + 3y > 12$$

$$-3y \geq 6 - 4x$$



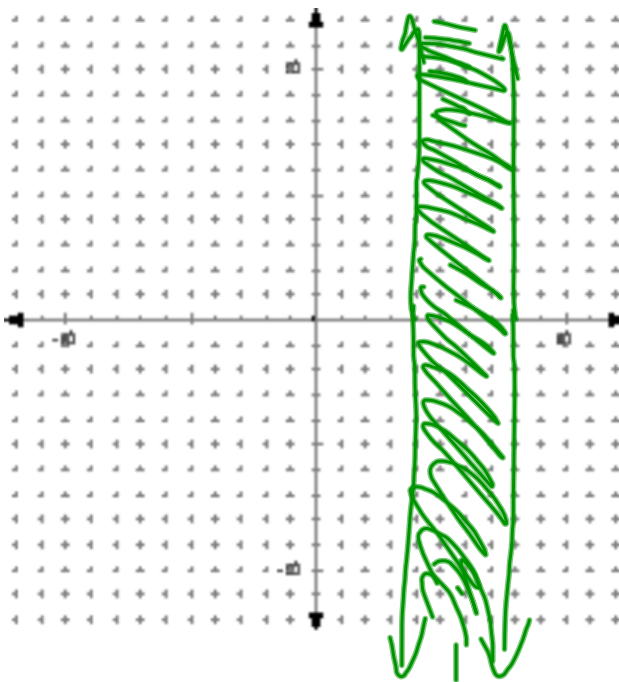
Nov 3-7:12 AM

ex 3:

$$4 \leq x \leq 8$$

$$x \geq 4$$

$$x \leq 8$$



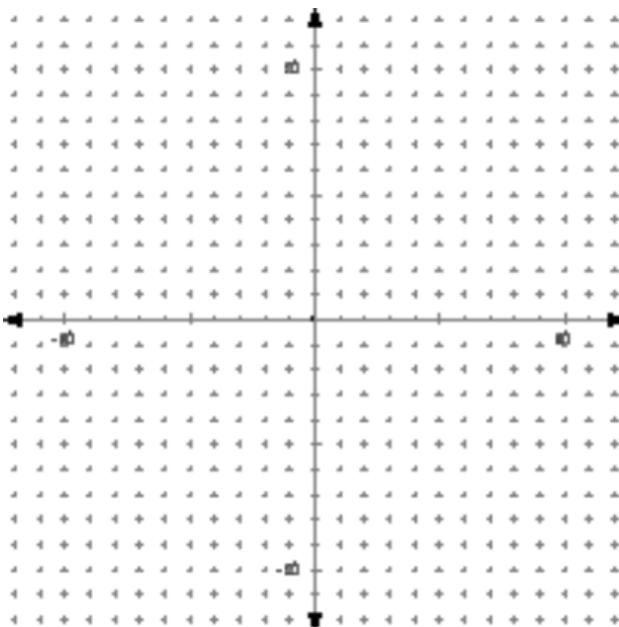
Nov 3-7:12 AM

Do:

$$y \leq 3x - 4$$

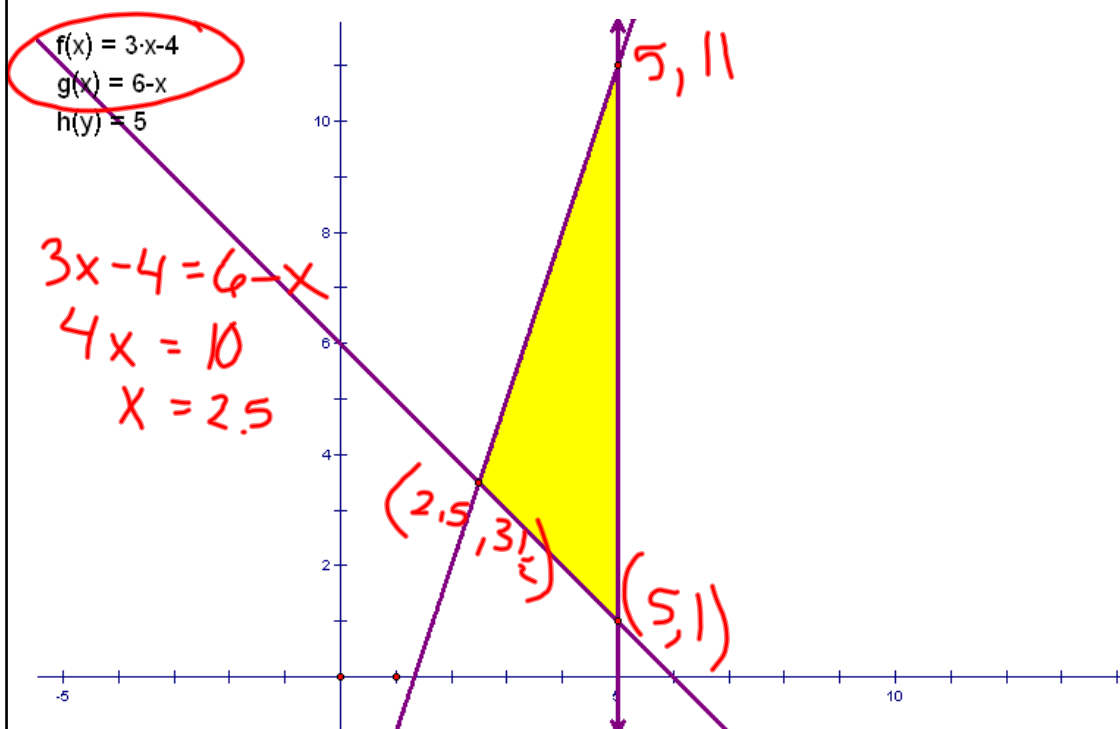
$$y \geq 6 - x$$

$$x \leq 5$$



Nov 3-7:12 AM

Find the corner points.



Nov 3-7:14 AM

ex:

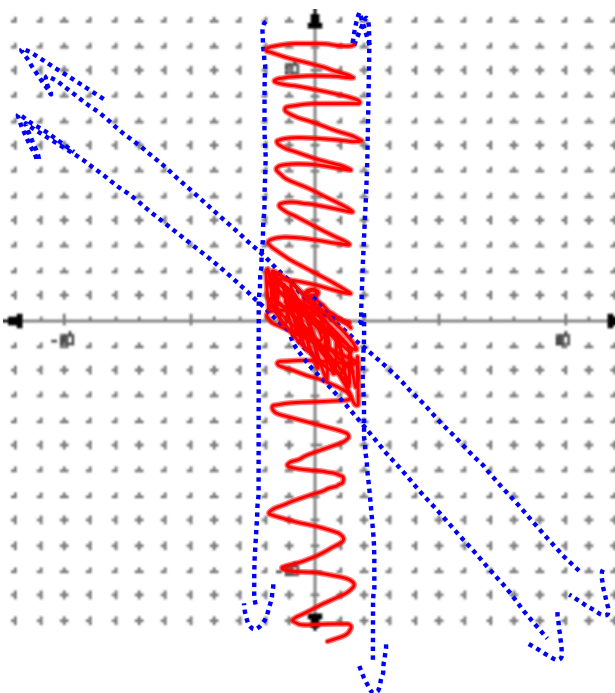
$$|x| < 2$$

$$|x + y| < 1$$

$x < 2$ AND $x > -2$

$x + y < 1$
 $y < -x + 1$
 AND

$x + y > -1$
 $y > -x - 1$

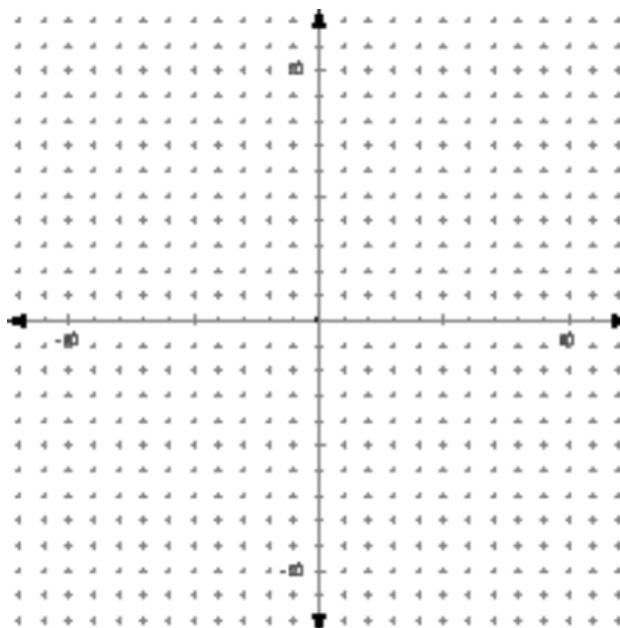


Nov 3-7:20 AM

ex:

$$|x + y| \geq 4$$

$$|x - y| \leq 4$$



Nov 3-7:20 AM

HW

p126 12, 15, 17, 20, 21, 24, 28

Nov 3-7:22 AM